

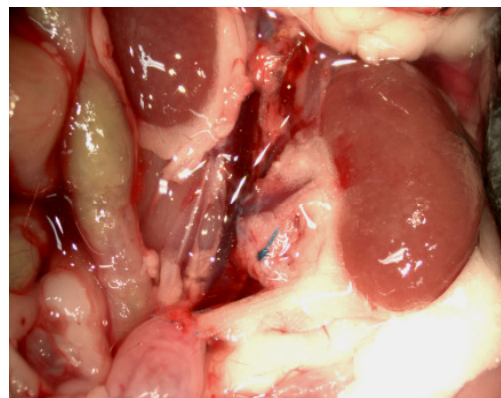
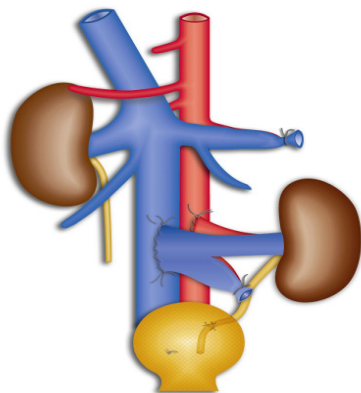
## Kidney Transplantation

### Scope of application

Kidney transplantation is a save and well established technique to compensate loss of renal function in humans. Immunosuppressive therapy has improved during the last decade but still acute and chronic rejection are important complications after transplantation.

### Models

Vascularized kidney transplantation can be performed in mice and rats. Depending on the strain combination for donor and recipients models for acute tubulo-interstitial rejection and for chronic rejection are established. In these models therapeutic approaches can be studied to prevent either inflammatory mechanisms in acute rejection or progressive fibrosis in chronic rejection



Situs after kidney transplantation.